



HOUSTON AIRPORT SYSTEM

STATISTICAL REPORT 2014 CALENDAR YEAR SUMMARY



Houston Airport System
P.O. Box 60106
Houston, TX 77205-0106

Table of Contents

1 Houston Airport System Operations

Passenger Statistics

2 Houston Airport System

3 George Bush Intercontinental

4 William P. Hobby

5 Houston Airport System Originating Enplaned Passengers

Air Service and Competition

6 Air Service and Competition

7 Houston Airline Passenger Shares

8 George Bush Intercontinental Airline Passenger Shares

9 William P. Hobby Airline Passenger Shares

Air Freight

10 Houston Airport System

11 George Bush Intercontinental

12 William P. Hobby

Houston Airport System

Aircraft Operations

Houston Airport System

CY	Commercial Aviation			Cargo			General Aviation			Military			Total Operations		
	Total	Change	% Change	Total	Change	% Change	Total	Change	% Change	Total	Change	% Change	Total	Change	% Change
2010	663,155	(10,330)	-12.8%	4,754	(2)	0.0%	158,348	(12,507)	-7.3%	25,197	(4,785)	-16.0%	851,454	(22,875)	-2.6%
2011	669,097	5,942	0.9%	5,115	361	7.6%	152,452	(5,896)	-3.7%	27,558	2,361	9.4%	854,222	2,768	0.3%
2012	647,214	(21,883)	-3.3%	4,708	(407)	-8.0%	129,805	(22,647)	-14.9%	30,510	2,952	10.7%	812,237	(41,985)	-4.9%
2013	651,450	4,236	0.7%	4,761	53	1.1%	127,651	(2,154)	-1.7%	24,502	(6,008)	-19.7%	808,364	(3,873)	-0.5%
2014	649,574	(1,876)	-0.3%	4,700	(61)	-1.3%	122,867	(4,784)	-3.7%	29,855	5,353	21.8%	806,996	(1,368)	-0.2%

George Bush Intercontinental (IAH)

CY	Commercial Aviation			Cargo			General Aviation			Military			Total Operations		
	Total	Change	% Change	Total	Change	% Change	Total	Change	% Change	Total	Change	% Change	Total	Change	% Change
2010	515,101	(12,683)	-4.9%	4,745	(6)	-0.1%	11,267	1,059	10.4%	234	64	37.6%	531,347	(6,821)	-1.3%
2011	511,540	(3,920)	-0.8%	5,104	359	7.6%	11,867	600	5.3%	211	(23)	-9.8%	528,722	(2,625)	-0.5%
2012	493,143	(17,983)	-3.5%	4,690	(414)	-8.1%	12,159	292	2.5%	250	39	18.5%	510,242	(18,480)	-3.5%
2013	488,262	(4,945)	-1.0%	4,754	64	1.4%	12,840	681	5.6%	442	192	76.8%	506,298	(3,944)	-0.8%
2014	491,504	3,313	0.7%	4,683	(71)	-1.5%	12,408	(432)	-3.4%	340	(102)	-23.1%	508,935	2,637	0.5%

William P. Hobby (HOU)

CY	Commercial Aviation			Cargo			General Aviation			Military			Total Operations		
	Total	Change	% Change	Total	Change	% Change	Total	Change	% Change	Total	Change	% Change	Total	Change	% Change
2010	139,467	3,511	3.4%	4	2	100.0%	68,003	(3,905)	-5.4%	2,140	543	34.0%	209,614	155	0.1%
2011	149,400	9,929	7.1%	8	4	100.0%	63,617	(4,386)	-6.4%	3,613	1,473	68.8%	216,638	7,024	3.4%
2012	145,245	(4,164)	-2.8%	17	9	112.5%	55,963	(7,654)	-12.0%	3,063	(550)	-15.2%	204,288	(12,350)	-5.7%
2013	151,332	6,099	4.2%	5	(12)	-70.6%	54,207	(1,756)	-3.1%	2,867	(196)	-6.4%	208,411	4,123	2.0%
2014	138,879	(12,457)	-8.2%	9	4	80.0%	52,092	(2,115)	-3.9%	2,667	(200)	-7.0%	193,647	(14,764)	-7.1%

Ellington Airport (EFD)

CY	Commercial Aviation			Cargo			General Aviation			Military			Total Operations		
	Total	Change	% Change	Total	Change	% Change	Total	Change	% Change	Total	Change	% Change	Total	Change	% Change
2010	8,587	(1,158)	-	5	2	66.7%	79,078	(9,661)	-10.9%	22,823	(5,392)	-19.1%	110,493	(16,209)	-12.8%
2011	8,157	(428)	-5.0%	3	(2)	-40.0%	76,968	(2,110)	-2.7%	23,734	911	4.0%	108,862	(1,631)	-1.5%
2012	8,826	671	8.2%	1	(2)	-66.7%	61,683	(15,285)	-19.9%	27,197	3,463	14.6%	97,707	(11,155)	-10.2%
2013	11,856	3,029	34.3%	2	1	100.0%	60,604	(1,079)	-1.7%	21,193	(6,004)	-22.1%	93,655	(4,052)	-4.1%
2014	19,191	7,329	61.8%	8	6	300.0%	58,367	(2,237)	-3.7%	26,848	5,655	26.7%	104,414	10,759	11.5%

Note: An operation is described as a landing and takeoff of an aircraft.

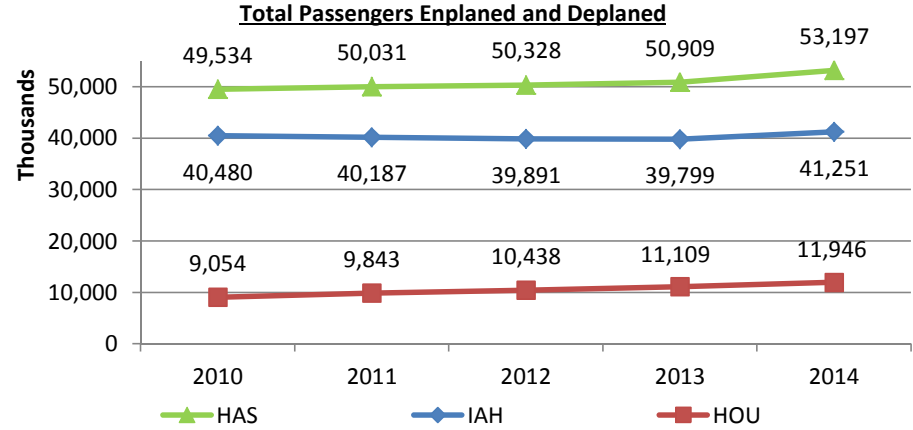
Houston Airport System

Total Passengers Summary

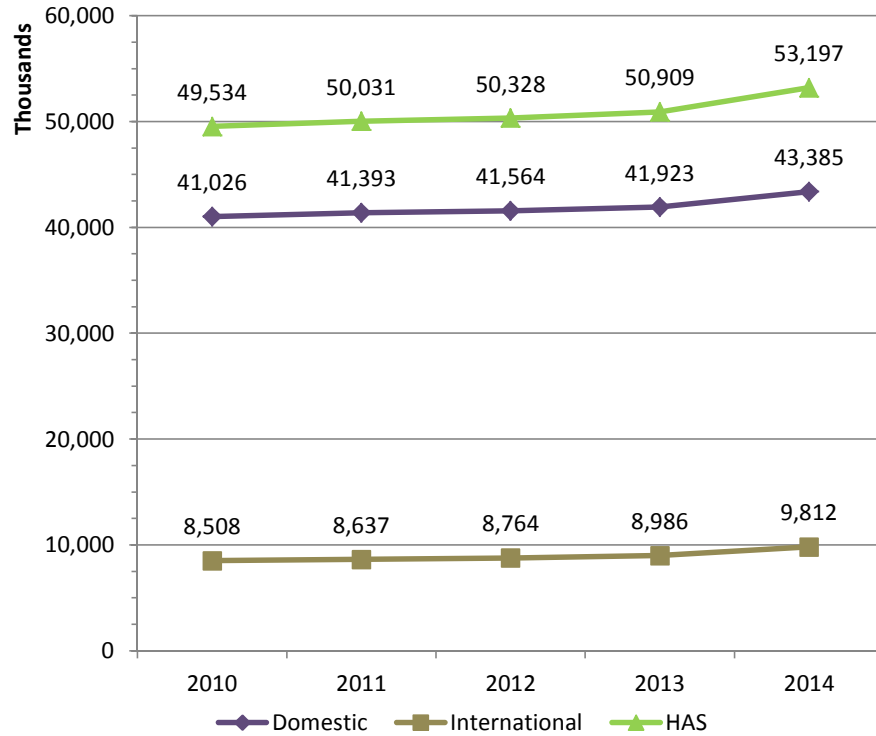
Total Passengers Enplaned and Deplaned

CY	George Bush Intercontinental (IAH)	William P. Hobby (HOU)	Houston Airport System (HAS)
2010	40,479,569	9,054,001	49,533,570
2011	40,187,442	9,843,302	50,030,744
2012	39,890,756	10,437,648	50,328,404
2013	39,799,414	11,109,449	50,908,863
2014	41,251,015	11,945,825	53,196,840

Note: Ellington Field not included.



Total Passengers



Total Passengers

CY	Enplaned	Deplaned	Total	Change	% Change
2010	24,794,234	24,739,336	49,533,570	1,027,775	2.1%
2011	24,995,235	25,035,509	50,030,744	497,174	1.0%
2012	25,146,943	25,181,461	50,328,404	297,660	0.6%
2013	25,452,648	25,456,215	50,908,863	580,459	1.2%
2014	26,580,259	26,616,581	53,196,840	2,287,977	4.5%

Domestic Passengers

CY	Enplaned	Deplaned	Total	Change	% Change
2010	20,547,012	20,478,680	41,025,692	329,840	0.8%
2011	20,699,477	20,693,935	41,393,412	367,720	0.9%
2012	20,783,077	20,781,120	41,564,197	170,785	0.4%
2013	20,966,250	20,956,398	41,922,648	358,451	0.9%
2014	21,683,865	21,700,688	43,384,553	1,461,905	3.5%

International Passengers

CY	Enplaned	Deplaned	Total	Change	% Change
2010	4,247,222	4,260,656	8,507,878	697,935	8.9%
2011	4,295,758	4,341,574	8,637,332	129,454	1.5%
2012	4,363,866	4,400,341	8,764,207	126,875	1.5%
2013	4,486,398	4,499,817	8,986,215	222,008	2.5%
2014	4,896,394	4,915,893	9,812,287	826,072	9.2%

George Bush Intercontinental

Total Passengers

Total Passengers

CY	Enplaned	Deplaned	Total	Change	% Change
2010	20,247,537	20,232,032	40,479,569	472,215	1.2%
2011	20,050,536	20,136,906	40,187,442	-292,127	-0.7%
2012	19,894,804	19,995,952	39,890,756	-296,686	-0.7%
2013	19,861,590	19,937,824	39,799,414	-91,342	-0.2%
2014	20,582,725	20,668,290	41,251,015	1,451,601	3.6%

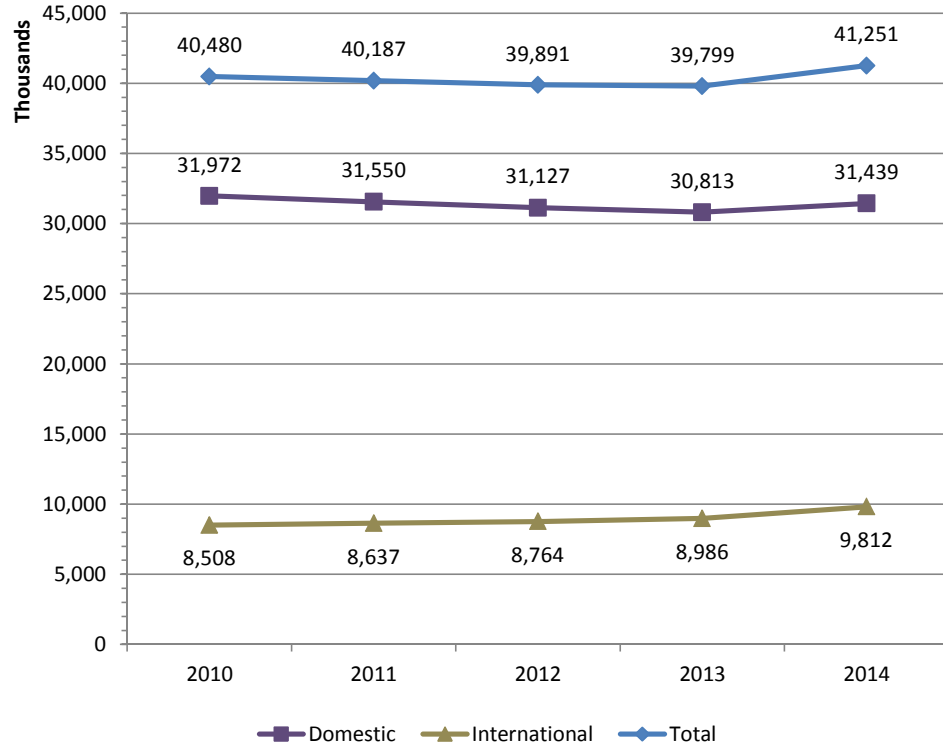
Domestic Passengers

CY	Enplaned	Deplaned	Total	Change	% Change
2010	16,000,315	15,971,376	31,971,691	-225,720	-0.7%
2011	15,754,778	15,795,332	31,550,110	-421,581	-1.3%
2012	15,530,938	15,595,612	31,126,550	-423,560	-1.3%
2013	15,375,192	15,438,007	30,813,199	-313,351	-1.0%
2014	15,686,331	15,752,398	31,438,729	625,530	2.0%

International Passengers

CY	Enplaned	Deplaned	Total	Change	% Change
2010	4,247,222	4,260,656	8,507,878	697,935	8.9%
2011	4,295,758	4,341,574	8,637,332	129,454	1.5%
2012	4,363,866	4,400,340	8,764,206	126,874	1.5%
2013	4,486,398	4,499,817	8,986,215	222,009	2.5%
2014	4,896,394	4,915,892	9,812,286	826,071	9.2%

Domestic and International Passengers



Total Passengers

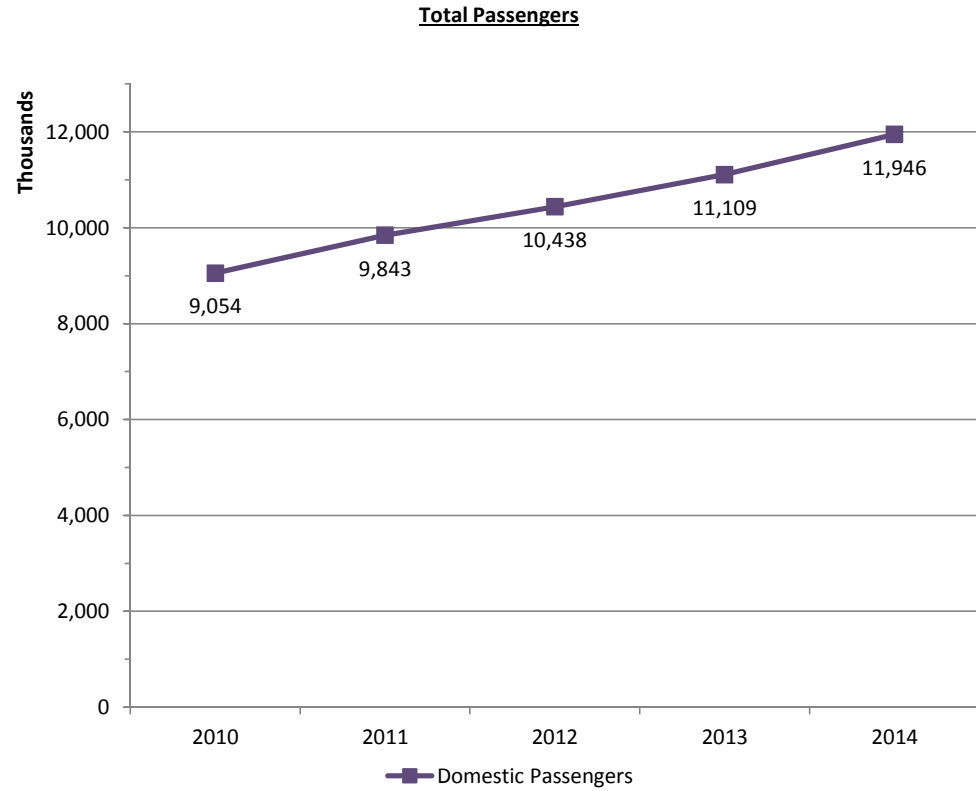
Total Passengers

CY	Enplaned	Deplaned	Total	Change	% Change
2010	4,546,697	4,507,304	9,054,001	555,560	6.5%
2011	4,944,699	4,898,603	9,843,302	789,301	8.7%
2012	5,252,139	5,185,509	10,437,648	594,346	6.0%
2013	5,591,058	5,518,391	11,109,449	671,801	6.4%
2014	5,997,534	5,948,291	11,945,825	836,376	7.5%

Note: International charter and diversions included in Total Passengers

Domestic Passengers

CY	Enplaned	Deplaned	Total	Change	% Change
2010	4,546,697	4,507,304	9,054,001	555,560	6.5%
2011	4,944,699	4,898,603	9,843,302	789,301	8.7%
2012	5,252,139	5,185,508	10,437,647	594,345	6.0%
2013	5,591,058	5,518,391	11,109,449	671,802	6.4%
2014	5,997,534	5,948,290	11,945,824	836,375	7.5%



Houston Airport System

Originating Enplaned Passengers

Houston Airport System

CY	Domestic	International	Total	% Change	% Total Enpl Pax
2010	10,810,020	2,085,808	12,895,828	410,766	52.0%
2011	11,390,995	2,223,704	13,614,699	718,871	54.5%
2012	11,270,933	2,163,369	13,434,302	-180,397	53.4%
2013	11,252,751	2,200,125	13,452,876	18,574	52.9%
2014	11,794,987	2,478,146	14,273,133	820,257	53.7%

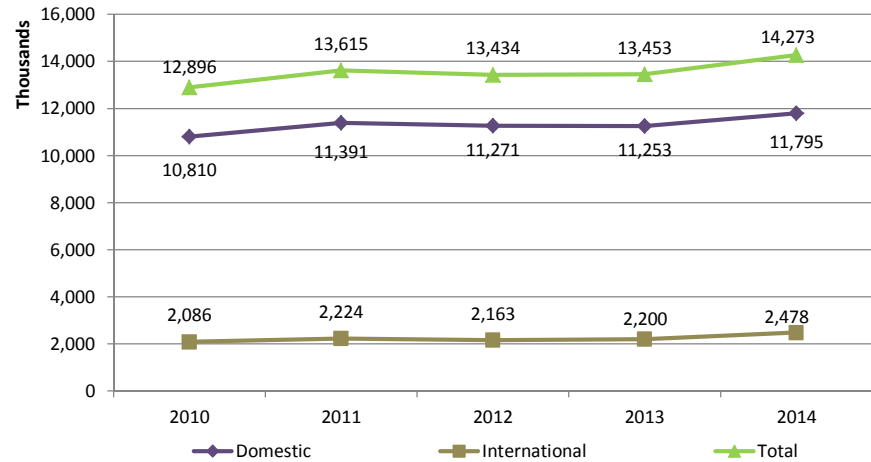
George Bush Intercontinental (IAH)

CY	Domestic	International	Total	% Change	% Total Enpl Pax
2010	7,354,793	2,085,808	9,440,601	268,631	46.6%
2011	7,604,324	2,223,704	9,828,028	387,427	49.0%
2012	7,332,751	2,163,369	9,496,120	-331,908	47.7%
2013	7,223,783	2,200,125	9,423,908	-72,212	47.4%
2014	7,547,198	2,478,146	10,025,344	601,436	48.7%

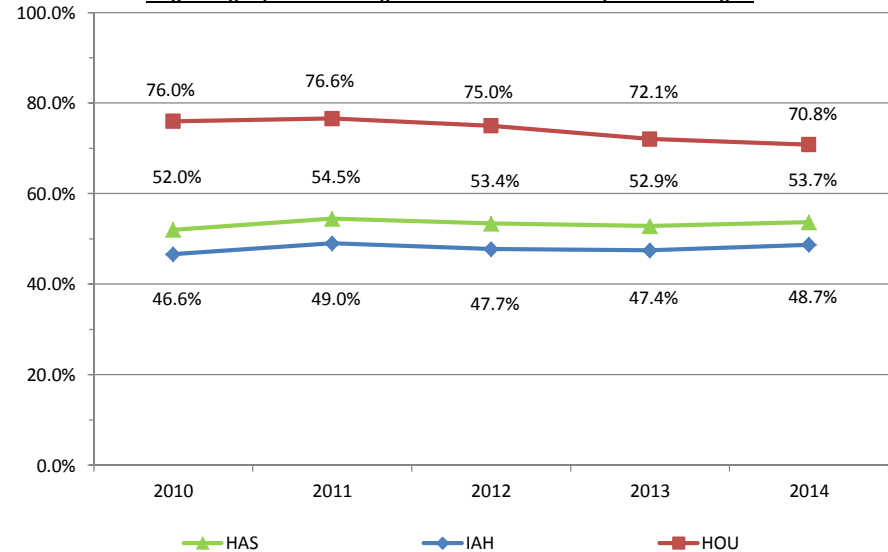
William P. Hobby (HOU)

CY	Domestic	International	Total	% Change	% Total Enpl Pax
2010	3,455,227	0	3,455,227	142,135	76.0%
2011	3,786,671	0	3,786,671	331,444	76.6%
2012	3,938,182	0	3,938,182	151,511	75.0%
2013	4,028,968	0	4,028,968	90,786	72.1%
2014	4,247,789	0	4,247,789	218,821	70.8%

Originating Enplaned Passengers



Originating Enplaned Passenger as a Percent of Total Enplaned Passengers



Houston Airport System

Air Service and Competition

Total Markets

2014	IAH	HOU	HAS
Domestic - United States	119	53	123
International (Subtotal)	71	0	71
Africa	1	-	1
Asia	3	-	3
Canada	5	-	5
Europe	8	-	8
Latin America (Caribbean, Central and South America)	25	-	25
Middle East	2	-	2
Mexico	27	-	27
Total	190	53	194

2013	IAH	HOU	HAS
Domestic - United States	115	50	119
International (Subtotal)	68	0	68
Africa	1	-	1
Asia	2	-	2
Canada	5	-	5
Europe	6	-	6
Latin America (Caribbean, Central and South America)	23	-	23
Middle East	2	-	2
Mexico	29	-	29
Total	183	50	187

Note: Number of markets are not additive systemwide due to airports served nonstop from both IAH and HOU

Number of Competitive Markets

2014	IAH	HOU	HAS
Domestic - United States	19	2	50
International (Subtotal)	8	0	8
Africa	0	-	0
Asia	0	-	0
Canada	2	-	2
Europe	3	-	3
Latin America (Caribbean, Central and South America)	1	-	1
Middle East	0	-	0
Mexico	2	-	2
Total	27	2	58

2013	IAH	HOU	HAS
Domestic - United States	18	1	49
International (Subtotal)	8	0	8
Africa	0	-	0
Asia	0	-	0
Canada	2	-	2
Europe	3	-	3
Latin America (Caribbean, Central and South America)	1	-	1
Middle East	0	-	0
Mexico	2	-	2
Total	26	1	57

Note: For HAS, table shows number of airports served, nonstop, from Houston (either IAH or HOU) by more than one airline.

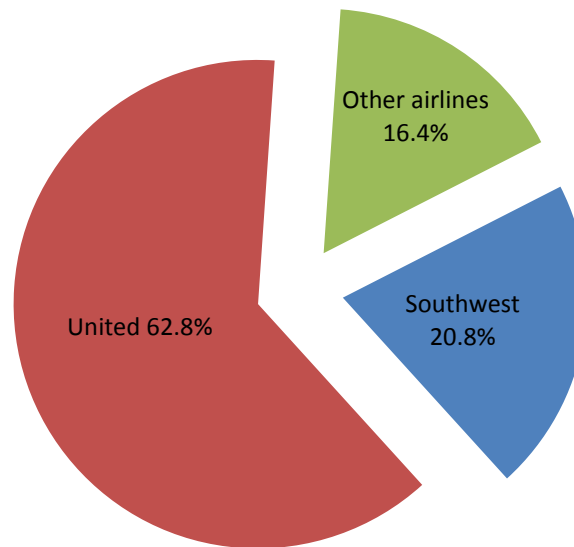
Houston Airport System

Airline Passenger Shares

Airline	2014			2013	
	Enplaned Passengers	Market Share	YOY	Enplaned Passengers	Market Share
Southwest	5,517,250	20.8%	6.2%	5,193,802	20.4%
United	16,704,963	62.8%	1.6%	16,434,244	64.6%
Other airlines	4,358,046	16.4%	13.9%	3,824,602	15.0%
Houston Airport System	26,580,259	100.0%	4.4%	25,452,648	100.0%

Note: Includes regional affiliates

2014 Airline Market Share

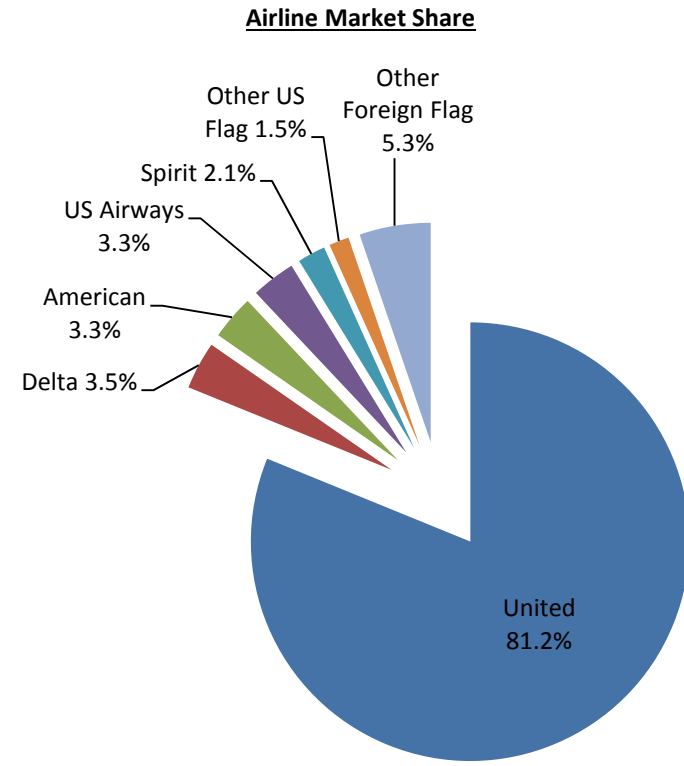


George Bush Intercontinental

Airline Passenger Shares

Domestic	2014			2013	
	Enplaned Passengers	Market Share	YOY	Enplaned Passengers	Market Share
Alaska	50,667	0.2%	-7.8%	54,946	0.3%
American	678,360	3.3%	8.8%	623,533	3.1%
Delta	722,153	3.5%	11.5%	647,914	3.3%
Frontier	110,831	0.5%	1.5%	109,212	0.5%
Spirit	423,144	2.1%	50.8%	280,581	1.4%
Sun Air	1,842	0.0%	-34.5%	2,813	0.0%
United	13,026,384	63.3%	0.3%	12,985,934	65.4%
US Airways	670,272	3.3%	1.5%	660,548	3.3%
Other airlines	2,678	0.0%	-72.4%	9,711	0.0%
Total Domestic	15,686,331	76.2%	2.0%	15,375,192	77.4%
International					
AeroMexico	117,699	0.6%	21.0%	97,275	0.5%
Air Canada	135,692	0.7%	16.2%	116,824	0.6%
Air China	70,243	0.3%	194.2%	23,873	0.1%
Air France	76,858	0.4%	5.9%	72,597	0.4%
American	39	0.0%	-	0	0.0%
Avianca	28,175	0.1%	-1.5%	28,595	0.1%
British Airways	139,173	0.7%	0.8%	138,015	0.7%
Emirates	103,333	0.5%	12.1%	92,198	0.5%
Interjet	5,970	0.0%	-	0	0.0%
KLM	92,490	0.4%	11.5%	82,940	0.4%
Korean Air	35,553	0.2%	-	0	0.0%
Lufthansa	141,487	0.7%	-7.5%	153,011	0.8%
Qatar Airways	78,806	0.4%	-1.7%	80,148	0.4%
Scandinavian Airlines	2,253	0.0%	-	0	0.0%
Singapore Airlines	46,456	0.2%	-21.5%	59,207	0.3%
Turkish Airlines	93,243	0.5%	66.9%	55,869	0.3%
United	3,678,579	17.9%	6.7%	3,448,310	17.4%
VivaAerobus	32,612	0.2%	65.6%	19,691	0.1%
Other airlines	17,733	0.1%	-0.6%	17,845	0.1%
Total International	4,896,394	23.8%	9.1%	4,486,398	22.6%
Airport Total	20,582,725	100.0%	3.6%	19,861,590	100.0%

Note: Includes regional affiliates



CY 2014 Airlines & Market Share
(based on total enplaned passengers)

1 United	16,704,963	81.2%
2 Delta	722,153	3.5%
3 American	678,399	3.3%
4 US Airways	670,272	3.3%
5 Spirit	423,144	2.1%
Other US Flag	301,710	1.5%
Other Foreign Flag	1,082,084	5.3%

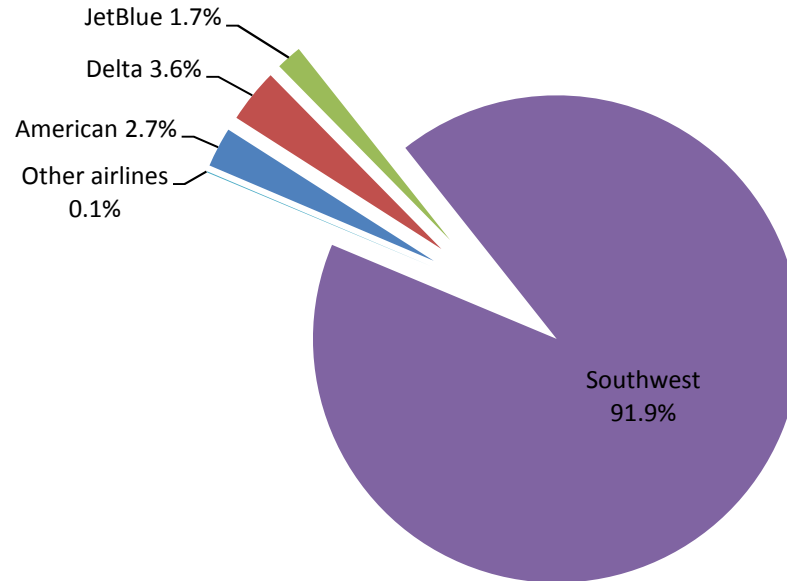
William P. Hobby

Airline Passenger Shares

Domestic	2014			2013	
	Enplaned Passengers	Market Share	YOY	Enplaned Passengers	Market Share
American	158,967	2.7%	34.5%	118,161	2.1%
Delta	214,796	3.6%	10.1%	195,149	3.5%
JetBlue	102,676	1.7%	26.6%	81,079	1.5%
Southwest	5,517,250	91.9%	6.2%	5,193,802	92.9%
Other airlines	3,845	0.1%	34.1%	2,867	0.1%
Airport Total	5,997,534	100.0%	7.3%	5,591,058	100.0%

Note: Includes regional affiliates

2014 Airline Market Share



Houston Airport System

Air Freight

Total Air Freight Operations

CY	George Bush Intercontinental (IAH)	William P. Hobby (HOU)	Ellington Airport (EFD)	Houston Airport System	Change	% Change
2010	4,745	4	5	4,754	(2)	0.0%
2011	5,104	8	3	5,115	361	7.6%
2012	4,690	17	1	4,708	(407)	-8.0%
2013	4,754	5	2	4,761	53	1.1%
2014	4,683	9	8	4,700	(61)	-1.3%

Houston Airport System (HAS) Air Freight

(metric tons)

CY	Domestic	International	Total	Change	% Change
2010	235,448	195,765	431,213	47,017	12.2%
2011	235,336	222,095	457,431	26,218	6.1%
2012	230,731	219,626	450,358	(7,074)	-1.5%
2013	224,170	215,548	439,719	(10,639)	-2.4%
2014	221,277	252,933	474,210	34,491	7.8%

George Bush Intercontinental (IAH) Air Freight

(metric tons)

CY	Domestic	International	Total	Change	% Change
2010	224,225	195,765	419,990	47,316	10.1%
2011	224,845	222,095	446,940	26,950	6.4%
2012	218,749	219,626	438,376	(8,564)	-1.9%
2013	211,256	215,548	426,804	(11,572)	-2.6%
2014	208,558	252,933	461,491	34,687	8.1%

William P. Hobby (HOU) Air Freight

(metric tons)

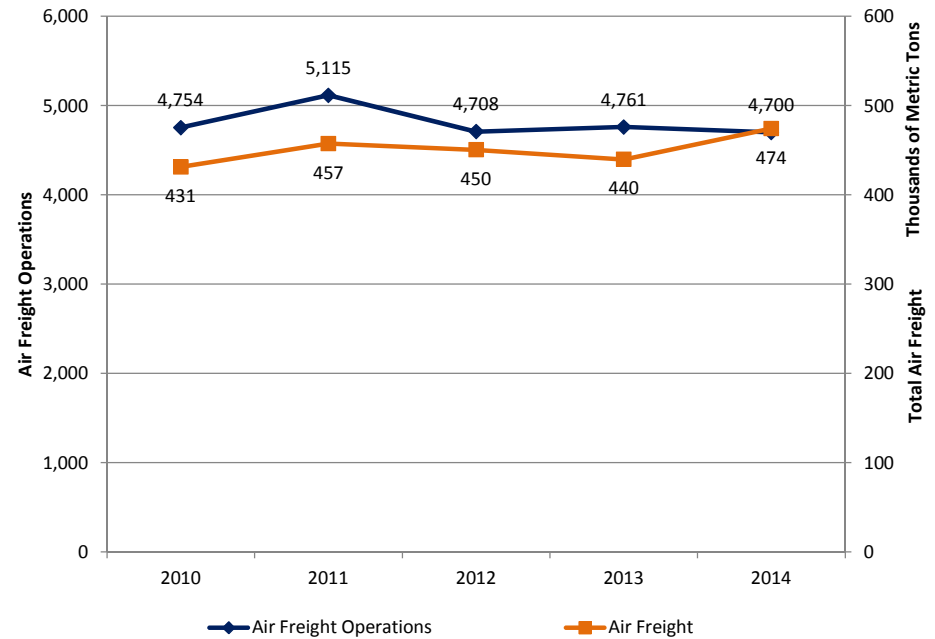
CY	Domestic	International	Total	Change	% Change
2010	11,222	0	11,222	(339)	-3.1%
2011	10,490	0	10,491	(732)	-6.5%
2012	11,982	0	11,982	1,491	14.2%
2013	12,914	0	12,914	933	7.8%
2014	12,704	1	12,705	(210)	-1.6%

Ellington Airport (EFD) Air Freight

(metric tons)

CY	Domestic	International	Total	Change	% Change
2010	1	0	1	1	-
2011	1	0	1	(0)	0.0%
2012	0	0	0	(0)	-100.0%
2013	0	0	0	(0)	0.0%
2014	14	0	14	14	100.0%

Air Freight Operations and Air Freight



George Bush Intercontinental

Air Freight

Total Air Freight
(metric tons)

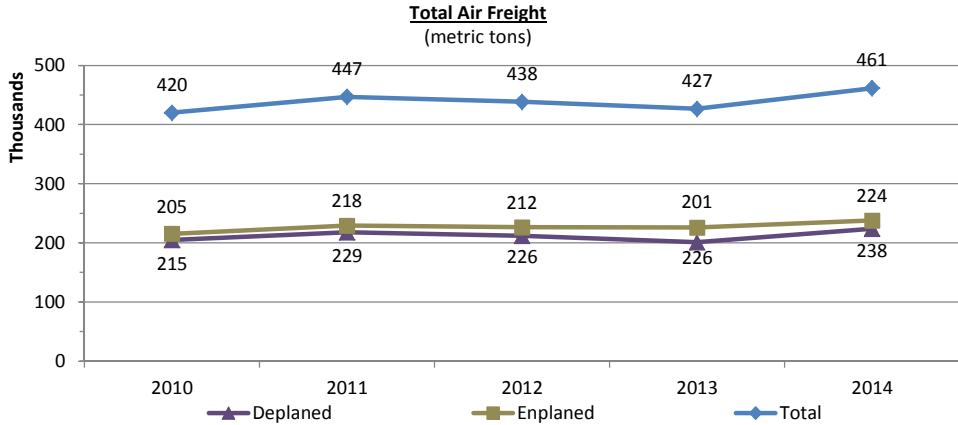
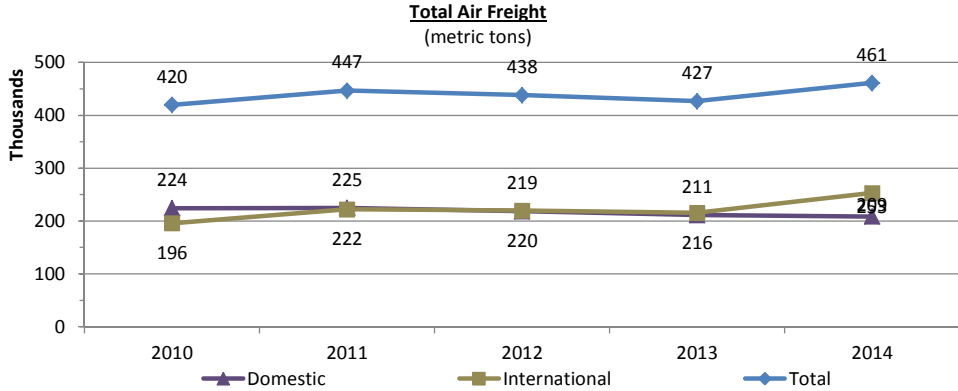
CY	Domestic	International	Total	Change	% Change
2010	224,225	195,765	419,990	47,316	12.7%
2011	224,845	222,095	446,940	26,950	6.4%
2012	218,749	219,626	438,376	(8,564)	-1.9%
2013	211,256	215,548	426,804	(11,572)	-2.6%
2014	208,558	252,933	461,491	34,687	8.1%

Deplaned Air Freight
(metric tons)

CY	Domestic	International	Total	Change	% Change
2010	119,439	85,226	204,665	28,121	15.9%
2011	119,913	97,921	217,835	13,170	6.4%
2012	114,291	97,709	212,000	(5,835)	-2.7%
2013	111,044	89,912	200,956	(11,044)	-5.2%
2014	106,291	117,360	223,651	22,695	11.3%

Enplaned Air Freight
(metric tons)

CY	Domestic	International	Total	Change	% Change
2010	104,786	110,539	215,326	19,196	9.8%
2011	104,931	124,174	229,105	13,780	6.4%
2012	104,458	121,917	226,375	(2,730)	-1.2%
2013	100,211	125,636	225,848	(528)	-0.2%
2014	102,267	135,572	237,840	11,992	5.3%



Air Freight

Total Air Freight
(metric tons)

CY	Domestic	International	Total	Change	% Change
2010	11,222	0	11,222	(339)	-2.9%
2011	10,490	0	10,491	(732)	-6.5%
2012	11,982	0	11,982	1,491	14.2%
2013	12,914	0	12,914	933	7.8%
2014	12,704	1	12,705	(210)	-1.6%

Enplaned Air Freight
(metric tons)

CY	Domestic	International	Total	Change	% Change
2010	5,840	0	5,840	(126)	-2.1%
2011	5,806	0	5,806	(34)	-0.6%
2012	6,432	0	6,432	626	10.8%
2013	6,686	0	6,686	254	3.9%
2014	6,504	1	6,505	(181)	-2.7%

Deplaned Air Freight
(metric tons)

CY	Domestic	International	Total	Change	% Change
2010	5,382	0	5,382	(214)	-3.8%
2011	4,685	0	4,685	(698)	-13.0%
2012	5,550	0	5,550	865	18.5%
2013	6,228	0	6,228	679	12.2%
2014	6,200	0	6,200	(29)	-0.5%

